



# MEGAGON PROJECT SOLUTIONS



**Valmet** → The cylinder must be lifted by the cradle until the top of the installation.

Supports must not be placed against the shell surface or the heads.

Lasting and securing arrangements only around the joints and against the cradle.

When tying to a crane, must not be twisted.

NOT TO BE RUMPLED

## What is Megagon?

Chemistry Professor Arthur Greenberg said “A Megagon is close to the perfection of a circle—a kind of generational transmutation.” while explaining the alchemy. Megagon symbolizes Cycle of Life, Earth, Sun, and Gold.

We, as Megagon Project Solutions, strongly believe in the transmutation of logistics in the close future. We are not able to transform anything to gold, but we have Engineer's Stone to transform your logistics needs to golden solutions.



## About Megagon

Megagon Project Solutions firstly established in Turkey to serving logistics sector as project partner and ship brokerage and extending service with establishing new office setup in The Netherlands. Megagon Benelux office mainly doing heavy haulage and project handling all over the Europe and between Europe to Turkey and CIS Countries. Megagon Turkey office is managing pricing and operational activities as HeadQuarter.

Our mission is what motivates us to do everything possible and every cargo could be carried with the dedication of flexible engineer's calculations. We do that by creating the most effective and innovative transport modes with sustainably and creatively to generate positive impacts in our partners who we work and cooperate.

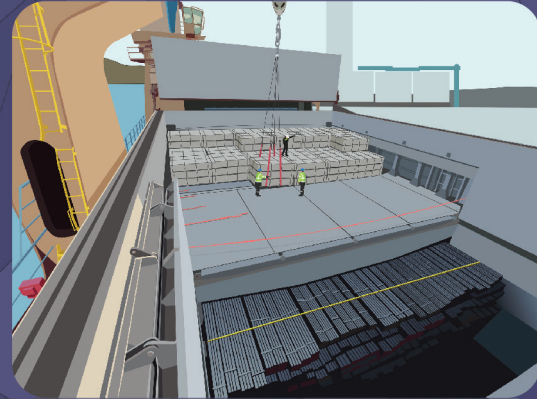
Megagon Project Solutions consist of 4 main segments. Those are Project Solutions, Engineering Solutions, Chartering Solutions and Heavy Haulage Solutions. The Project division is mostly dedicated to finding the most effective transport methods for our partners. The Engineering division is mostly dedicated to calculating possibilities and any risk on planned transport mode. The Chartering division is mostly dedicated to finding the optimum vessel which is the most suitable for the cargoes' needs.





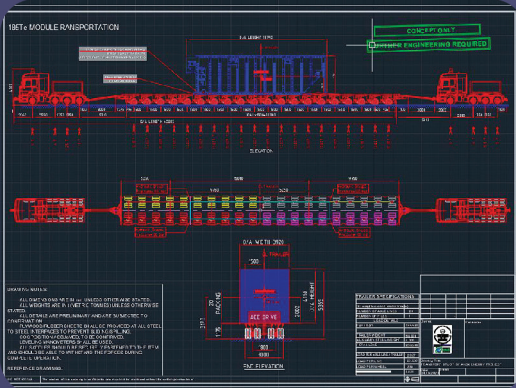
## Project Solutions

- Door to Door transportation for Heavy Lift or OOG cargoes to all over the world.
- Flexible transit connection from/to Turkey
- Regular RORO Connection ex Turkey to West Africa
- Dedicated staff for port operations with detailed brief reporting



## Chartering Solutions

- Regular Semi Liner Breakbulk service from China to Turkey
- Flexible part cargo combinations for effective freight level
- Close relation with breakbulk operators and mpp owners



## Engineering Solutions

- Stowage Calculations
- Load Securing Calculations
- Technical Drawings
- Method of Statements and Operation Manuals
- Heavy Lift and Tandem Calculations
- Voyage or Transportation Simulations
- Risk Assessments



## Heavy Haulage Solutions

- Regular heavy haulage & oversize cargo transportation solutions between Europe > Turkey > CIS countries
- Arranging Road Permits and pilots car
- Road surveys and bridge static checks



## Project Solutions

[project@megagon.net](mailto:project@megagon.net)

Due to the high risk and sensitivity of the project cargoes, our dedicated and experienced team is calculating all potential risks with creative, flexible, and innovative methods.

Our team is well experienced in rolling equipment. Besides good relations with Ro-Ro carriers and offering Ro-Ro services all over the world we are providing regular Ro-Ro connections from Turkey to West African countries via North European ports with the combination of two different carriers under through BLs.

Our well-experienced operational team is attending all critical steps on transportation and issues a brief report at the end of transportation.

In case of any lack of service or difficulty to find a suitable vessel, our well-experienced team is looking for a possibility to make a connection through other ports. If we need to give an example, for one case we carried a water treatment plant from Turkey to Grand Cayman via Antwerp due to a lack of regular connection for a single OOG unit.





## Chartering Solutions

[chartering@megagon.net](mailto:chartering@megagon.net)

We offer a wide range of ship chartering solutions to our partners. With full of our experience in the ship chartering market, we are providing the most suitable vessel with flexible solutions.

Besides general cargoes, we have a huge experience with project cargoes and supporting our charterers with great relations with MPP owners.

Our dedicated market is Far East, Europe, West Africa, and Middle East. Especially we are providing a regular connection about 2 to 4 sailing per month from China to Mediterranean & Europe, 3 to 6 sailing between Europe & Med, 2 sailing from Mediterranean to West Africa.

In 2021, 45 shipments were secured, and fixed volumes of cargoes were approximately 20000tons.





## Heavy Haulage Solutions

[benelux@megagon.net](mailto:benelux@megagon.net)

With our comprehensive experience in all cargo segments, we provide direct or indirect trucking services to our clients. When the cargoes exceed normal transportation limits, we examine all possibilities and road conditions to determine the most suitable transport solutions. Besides direct trucking, we offer multimodal transport solutions as our daily activity, especially between Turkey and North Europe. Time is getting more critical to all industrial activities and for avoiding huge delays due to waiting for road permits, we can able to provide combined permits to get cargoes faster than normal routine pre-notice periods. For heavier or wider cargoes we arrange road and side surveys for safer delivery.

Regular heavy haulage & oversize cargo transportation solutions between Europe > Turkey > CIS countries.

Arranging Road Permits and Pilot cars.

Road surveys and bridge static checks.







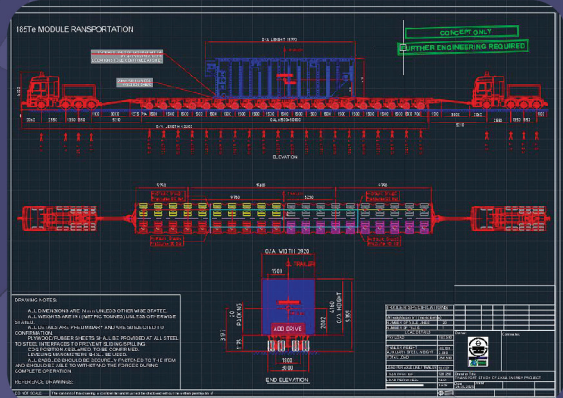
## Engineering Solutions

[solutions@megagon.net](mailto:solutions@megagon.net)

When the size of cargoes comes over the limits it would be more complicated and engineering studies would be necessary for safe transportation. We are calculating complex lifting and transport structures to decide the most effective transport methods.

For heavy components, we arrange a meeting with the producers' engineering team to identify any logistics obstacles and bottlenecks. After the meeting, the prepared method of statement for transportation is to clarify all stages of logistics needs quite easily by supporting proper technical drawings.

In case the shipping concepts needs we are preparing lifting methods, stowage, and load/securing calculations and we are simulating on 2D or 3D modeling.





**LOCATION OF OUR TURKEY OFFICE & TURKISH PORTS**



**LOCATION OF OUR NETHERLANDS OFFICE**



**RORO & BREAKBULK  
CONNECTION VIA ANTWERP/NORTH EUROPE**



**EUROPE / CIS CONNECTION  
VIA TURKEY / TRIESTE & SETE ROUTE**



# YANKEE DRYER

Max.L: **935cm** Max.W: **562cm** Max.H:**572cm**  
Max.Weight:**147500 Kgs**

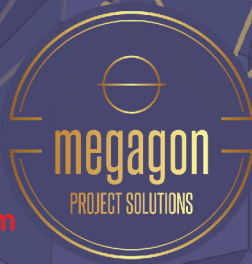
FEBRUARY 2021



KARLSTAD,SE >> ISKENDERUN,TR



7 Units / 230 Ton / 625 CBM



## TURBINE SECTION

Max.L: 680cm Max.W: 478cm Max.H: 367cm  
Max.Weight: 124700 Kgs

MARCH 2021



ANTWERP,BE >> MERSIN,TR



1 Units / 124,70 Ton / 119,29 CBM



## TROMMEL SCREEN

Max.L: **1150cm** Max.W: **328cm** Max.H: **333cm**  
Max.Weight: **23000 Kgs**

MARCH 2021

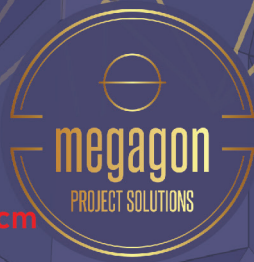


GEMLIK,TR >> CASABLANCA,MA



1 Unit / 23 Ton / 125 CBM





## MOBILE CRANE

Max.L: **1750cm** Max.W: **382cm** Max.H:**388cm**  
Max.Weight: **70100 Kgs**

APRIL 2021



DERINCE,TR >> LAGOS,NG



1 Unit / 70,10 Ton / 259,38 CBM



## TELESCOPIC HANDLER

Max.L: **819cm** Max.W: **254cm** Max.H: **308cm**  
Max.Weight: **17960 Kgs**

APRIL 2021



DERINCE, TR >> GEORGETOWN, GRAND CAYMAN



1 Unit / 17,96 Ton / 64,07 CBM



## SLUDGE DEWATERING SYSTEM

Max.L: 1219cm Max.W: 295cm Max.H: 299cm  
Max.Weight: 9000 Kgs

APRIL 2021



GEBZE, TR >> ONNE, NG



6 Units / 28,79 Ton / 235,92 CBM



## TRAFO & OIL

Max.L: 1140cm Max.W: 525cm Max.H:440cm  
Max.Weight:258000 Kgs

APRIL 2021



DERINCE,TR >> TEMA,GH



218 Units / 459,43 Ton / 807 CBM



## MDF CHIPBOARDS

Max.L: **280cm** Max.W: **210cm** Max.H: **60cm**  
Max.Weight: **1874 Kgs**

APRIL 2021



DERINCE,TR >> TEMA,GH



507 Units / 951,03 Ton / 1790 CBM



## STEEL REBARS & COILS

13560 mtons  
(2464mt WRIC + 11096mt Steel Rebars)

MAY 2021



DILISKELESI,TR >> FRANCISCO DO SUL,BR



13560 mtons steel (2,464mt WRIC + 11096mt Steel Rebars)



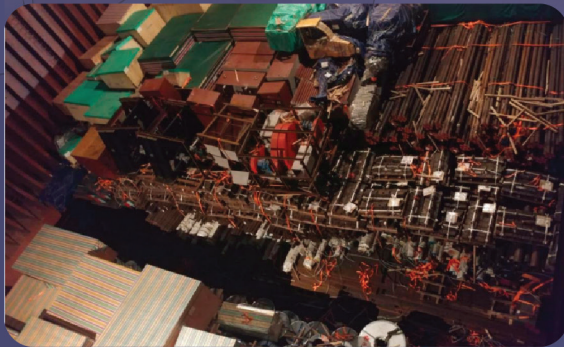
## ROOT STIFFENER PLATE

Max.L: 190cm Max.W: 120cm Max.H: 92cm  
Max.Weight: 2020 Kgs

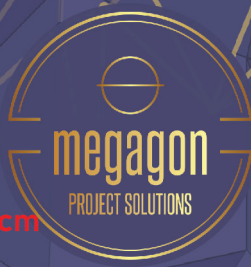
DECEMBER 2021



SHANGHAI,CN >> DILISKELESI,TR



83 Units / 147,28 Ton / 103,962 CBM



## STOCK CO2 STORAGE TANK

Max.L: **2258cm** Max.W: **490cm** Max.H: **497cm**  
Max.Weight: **76000 Kgs**

FEBRUARY 2022

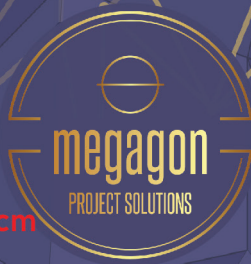


KAYSERI,TR >> ROTTERDAM,NL



1 Unit / 76 Ton / 539,81 CBM

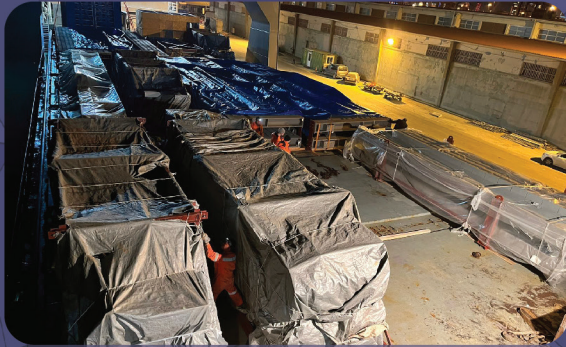




## STEEL STRUCTURE

Max.L: 1500cm Max.W: 420cm Max.H: 240cm  
Max.Weight: 23310 Kgs

MARCH 2022



KOCAELI, TR >> CHENNAI, IN



25 Units / 365,16 Ton / 1225 CBM



## UPPER REACTOR

Max.L: 932cm Max.W: 451cm Max.H: 460cm  
Max.Weight: 26670 Kgs

MAY 2022



MASAN, KR >> HAYDARPASA, TR



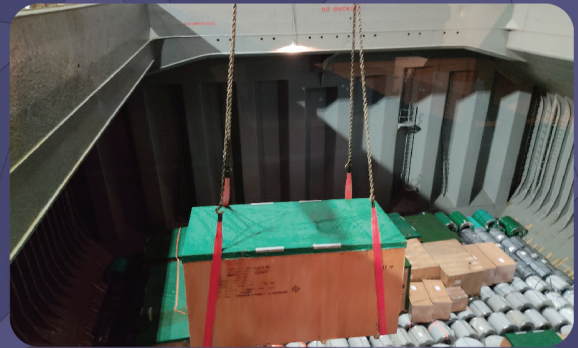
12 Units / 106,61 Ton / 631.95 CBM



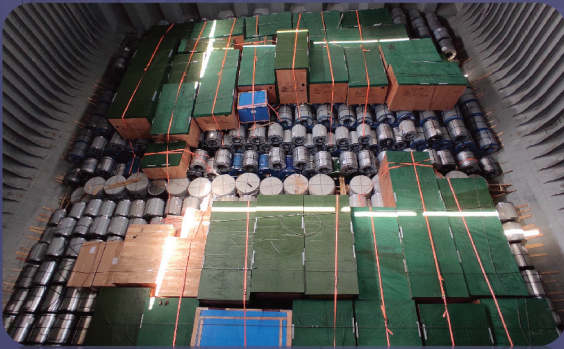
## WOODEN CASES

Max.L: **760cm** Max.W: **264cm** Max.H: **300cm**  
Max.Weight: **121110 Kgs**

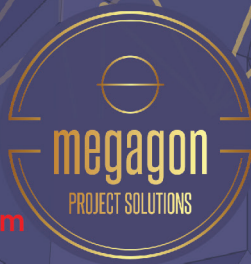
JUNE 2022



SHANGHAI,CN >> DILISKELESI,TR



32 Units / 68,67 Ton / 563,32 CBM



## CEMENT MILL PARTS

Max.L: **1153cm** Max.W: **580cm** Max.H: **535cm**  
Max.Weight: **22840 Kgs**

JUNE 2022



TUZLA, TR >> GEMLIK, TR



1 Unit / 22,84 Ton / 357,77 CBM



## MOBILE DENTAL CLINIC

Max.L: **742cm** Max.W: **200cm** Max.H: **290cm**  
Max.Weight: **3000 Kgs**

JULY 2022



DERINCE, TR >> DAKAR, SN



1 Units / 3 Ton / 43,03 CBM



## STEEL STRUCTURE

Max.L:1989cm Max.W: 482cm Max.H:412cm  
Max.Weight:24150 Kgs

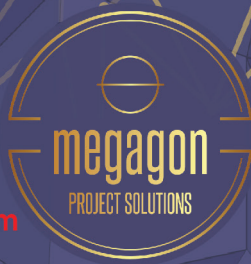
JULY 2022



LAEM CHABANG, TH >> HAYDARPASA, TR



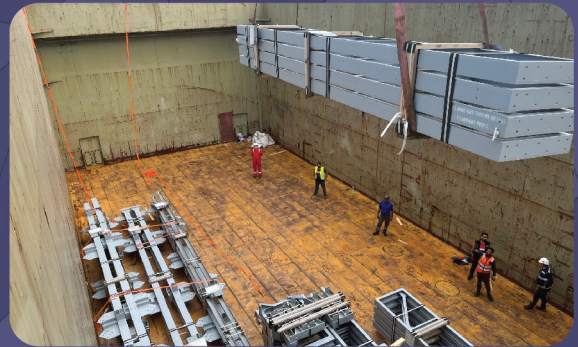
585 Units / 1543,99 Ton / 7891,04 CBM



## STEEL STRUCTURE

Max.L: 1916cm Max.W: 566cm Max.H: 260cm  
Max.Weight: 29934 Kgs

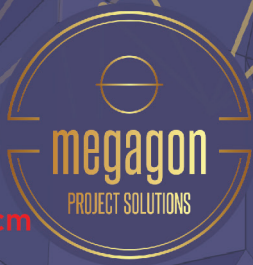
JULY 2022



LAEM CHABANG, TH >> HAYDARPASA, TR



236 Units / 1048,23 Ton / 7341,90 CBM



**MOBILE PLANT AND SCREEN**  
Max.L: **1470cm** Max.W: **397cm** Max.H: **470cm**  
Max.Weight: **51500 Kgs**

**JULY 2022**



**DERINCE, TR >> GALVESTON, TX**



**4 Units / 110,50 Ton / 594,39 CBM**





## SELF PROPELLED TRUCK

Max.L: **922cm** Max.W: **253cm** Max.H: **321cm**  
Max.Weight: **10780 Kgs**

**AUGUST 2022**



**DERINCE, TR >> JEDDAH, SA**



**4 Units / 43,12 Ton / 322,74 CBM**



## CONDENSER

Max.L: 1270cm Max.W: 490cm Max.H: 367cm  
Max.Weight: 103000 Kgs

SEPTEMBER 2022



SHANGHAI,CN >> HAYDARPASA,TR



5 Units / 114,08 Ton / 388,58 CBM



## CRAWLER CRANE

Max.L: 1110cm Max.W: 320cm Max.H: 342cm  
Max.Weight: 46700 Kgs

NOVEMBER 2022



GEMLIK,TR >> ALEXANDRIA,EG



1 Unit / 46,70 Ton / 123,30 CBM



## AIRPORT VEHICLE

Max.L: **1140cm** Max.W: **436cm** Max.H: **390cm**  
Max.Weight: **28200 Kgs**

NOVEMBER 2022



ANTWERP, BE >> FREETOWN, SL



1 Unit / 28,20 Ton / 193,84 CBM



## TOWABLE LPG TANK

Max.L: **1425cm** Max.W: **250cm** Max.H: **412cm**  
Max.Weight: **14100 Kgs**

NOVEMBER 2022



DERINCE,TR >> WALVIS BAY,NA



2 Units / 28,20 Ton / 293,55 CBM



## ASPHALT PLANT

Max.L: **1220cm** Max.W: **300cm** Max.H: **320cm**  
Max.Weight: **17300 Kgs**

SEPTEMBER 2022



ISKENDERUN, TR >> SOHAR, OM



50 Units / 133,98 Ton / 1276 CBM



## AIR PREHEATER

Max.L: **1423cm** Max.W: **279cm** Max.H: **280cm**  
Max.Weight: **26200 Kgs**

JANUARY 2023



BRUCHSAL,DE >> TRIESTE,IT



1 Unit / 26,20 Ton / 220 CBM



## SELF PROPELLED MIXED WAGON

Max.L: **1003cm** Max.W: **263cm** Max.H: **310cm**

Max.Weight: **16100 Kgs**

JANUARY 2023

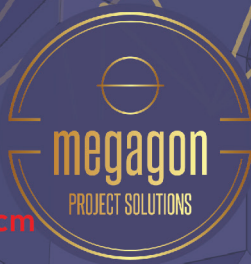


BREGANZE,IT >> KONYA,TR



1 Unit / 16,10 Ton / 81,77 CBM





## SELF PROPELLED TRUCK

Max.L: 1470cm Max.W: 250cm Max.H: 420cm  
Max.Weight: 31790 Kgs

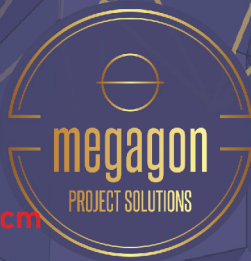
JANUARY 2023



DERINCE, TR >> ZARATE, AR



2 Units / 62,80 Ton / 295,41 CBM



## ROTARY DRYER

Max.L: **3285cm** Max.W: **357cm** Max.H: **440cm**  
Max.Weight: **151000 Kgs**

SEPTEMBER 2022



SHANGHAI,CN >> HAYDARPASA,TR



5 Units / 114,08 Ton / 388,58 CBM



## CABLE DRUM

Max.L: **400cm** Max.W: **216cm** Max.H: **400cm**  
Max.Weight: **12500 Kgs**

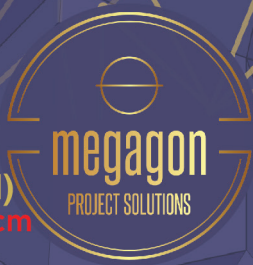
FEBRUARY 2023



BILECIK,TR >> VOLUNTARI,RO



4 Units / 50 Ton / 138,24 CBM



# TUNNEL BORING MACHINE(TBM)

Max.L: 1360cm Max.W: 665cm Max.H: 470cm  
Max.Weight:128000 Kgs

FEBRUARY 2023



TUZLA,TR >> GEBZE,TR



28 Units / 695,70 Ton / 3074,08 CBM



## HIGH VOLTAGE MOTOR

Max.L: 468cm Max.W: 330cm Max.H:390cm  
Max.Weight:19750 Kgs

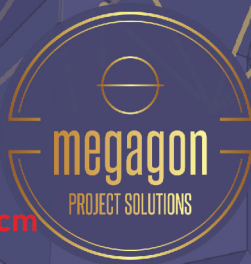
MARCH 2023



MOECHENGLADBACH, DE >>TENGIZ,KZ



9 Units / 119,50 Ton / 604.14 CBM



## MOBILE CRANE

Max.L: 1580cm Max.W: 358cm Max.H: 424cm  
Max.Weight: 61000 Kgs

MARCH 2023



JEDDAH, KSA >> MONROVIA, LR



1 Unit / 61 Ton / 239,83 CBM



## PANELVAN

Max.L: **625cm** Max.W: **210cm** Max.H: **270cm**  
Max.Weight: **3500 Kgs**

MARCH 2023



DERINCE, TR >> DAKAR, SN



1 Unit / 3,50 Ton / 35,43 CBM



## MACHINERY PARTS

Max.L: 790cm Max.W: 410cm Max.H: 260cm  
Max.Weight: 82000 Kgs

MARCH 2023



DUSSELDORF,DE >> TRIESTE,IT



1 Unit / 82 Ton / 84,21 CBM





## AGRICULTURAL MACHINERY

Max.L: **650cm** Max.W: **230cm** Max.H: **180cm**  
Max.Weight: **3500 Kgs**

MARCH 2023



MASSANZAGO,IT >> KONYA,TR



2 Units / 5 Ton / 55 CBM



## STEEL PIPES

Max.L: 1360cm Max.W: 245cm Max.H: 270cm  
Max.Weight: 21000 Kgs

MARCH 2023



ROVIGO,IT >> TENGIZ,KZ



495 Units / 1155 Ton / 4950 CBM



## GENERATION SET

Max.L: **950cm** Max.W: **300cm** Max.H: **350cm**  
Max.Weight: **55000 Kgs**

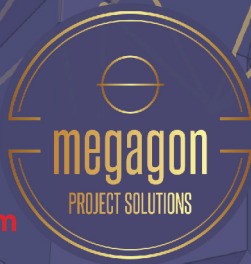
MARCH 2023



GEBZE,TR >> CIS



1 Unit / 55 Ton / 99,75 CBM



## PRINT STAND

Max.L: **605cm** Max.W: **360cm** Max.H: **325cm**  
Max.Weight: **26000 Kgs**

MAY 2023



BIELEFELD,DE >> TRIESTE,IT



1 Unit / 26 Ton / 70,79 CBM



## COLD MILL EQUIPMENTS

Max.L:1693cm Max.W: 323cm Max.H:422cm  
Max.Weight:21900 Kgs

MAY 2023



SHANGHAI,CN >> DILISKELESI,TR



66 Units / 322,70 Ton / 886,30 CBM



## Meet With The Team

### BARIS CEVIKER

Managing Consultant  
Graduated from Human Engineering  
25 years plus experience on logistics & International trade  
0090 535 255 91 89-baris.ceviker@megagon.net



### SUHA BERKSOY

Project and Engineering Expert  
Graduated from Marine and Transport Engineering  
16 years plus experience on shipping and project sector  
0090 555 631 23 13-suha.berksoy@megagon.net



### OMER OMEROGLU

Land Freight Expert / The Netherlands Country Manager  
Graduated from Transportation and Logistics  
16 years plus experience on logistics sector.  
0031 6 2911 7704-omer.omeroglu@megagon.net



### ALICAN UZER

Project Expert and Port Captain  
Graduated from Maritime Transportation and  
Management Engineering  
11 years plus experience on board of vessel as an officer  
0090 507 217 39 46-alican.uzer@megagon.net





## Meet With The Team

### SERHAT UZUN

Chartering Expert

Graduated from Marine and Transport Engineering

11 years plus experience on chartering sector

0090 507 093 75 31-omer.uzun@megagon.net



### OZGEN AKBAY

Roro Expert

Graduated from Social Sciences Teacher

6 years plus experience on RoRo sector

0090 543 474 68 24-ozgen.akbay@megagon.net



### SELIN ACIK

Operations Specialist & Networking Coordinator

Graduated from Faculty of Science

6 years plus Experience on Marketing

0090 543 151 18 89-selin.acik@megagon.net



### MERT AYVAZ

Chartering Specialist

Graduated from Business Administration

3 years plus experience on chartering sector

0090 539 917 25 65-mert.ayvaz@megagon.net





Megagon Project ve Denizcilik Ltd. Şti.  
Folkart Towers 47B No:2809  
Bayrakli, Izmir /Turkey  
+90 232-215-0422

[megagon@megagon.net](mailto:megagon@megagon.net)

Megagon Project Solutions B.V.  
Stationsstraat5, 4571 LA  
Axel, The Netherlands  
+31 62 911 7704

[benelux@megagon.net](mailto:benelux@megagon.net)

Megagon Project Solutions LLC  
112 Capitol TrlSte A672  
Newark, Delaware / US  
+1302-565-0144

[megagon@megagon.net](mailto:megagon@megagon.net)



Megagon Project Solutions as a project service provider for logistics sector. We are targeting to act in close relation with our clients and providing alternative solutions for their requirements. Tailor-made project and engineering solutions are provided with full of our professional experiences.

